

YATES ASSOCIATES
ARCHITECTURE INC.

- ARCHITECTURE
- PLANNING
- INTERIOR DESIGN

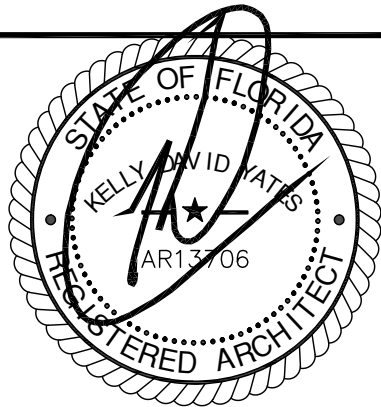
AA-26001673
330 CLEMATIS ST, SUITE 210
WEST PALM BEACH, FL 33401
TEL: 561-653-8280 FAX: 561-653-8279
WWW.YATESARCHITECTURE.COM
EMAIL: KELLY@YATESARCHITECTURE.COM

DATE: 12-16-24
JOB NO: 24-1289
DESIGN BY: JCH
DRAWN BY: JCH
APPROVED: KDY
REVISIONS:

COMMERCIAL TENANT IMPROVEMENT PLANS:

LT 20 LLC
115 NW 16TH ST.
POMPANO BEACH FL 33060

AAC
REVIEW
09-22-25

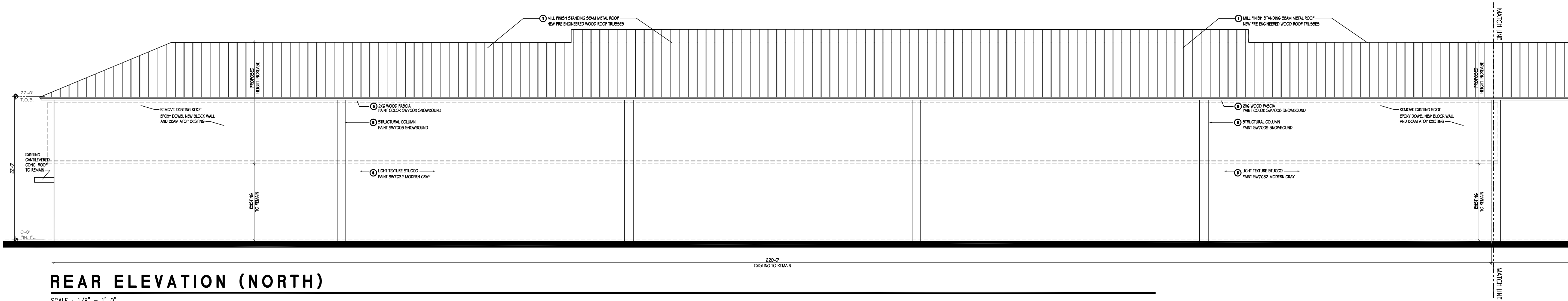


KELLY D. YATES
FLORIDA AR 13706

SHEET NO.

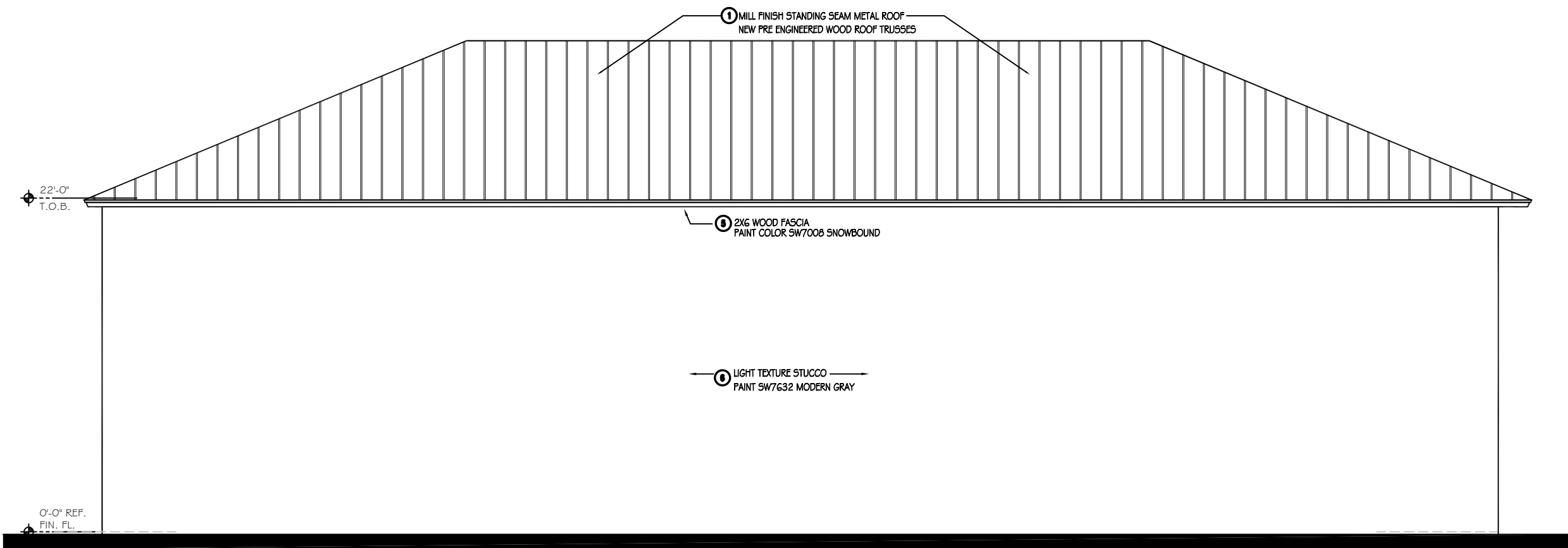
A-5

OF - SHTS
Copyright © 2025 Yates Architecture Inc.



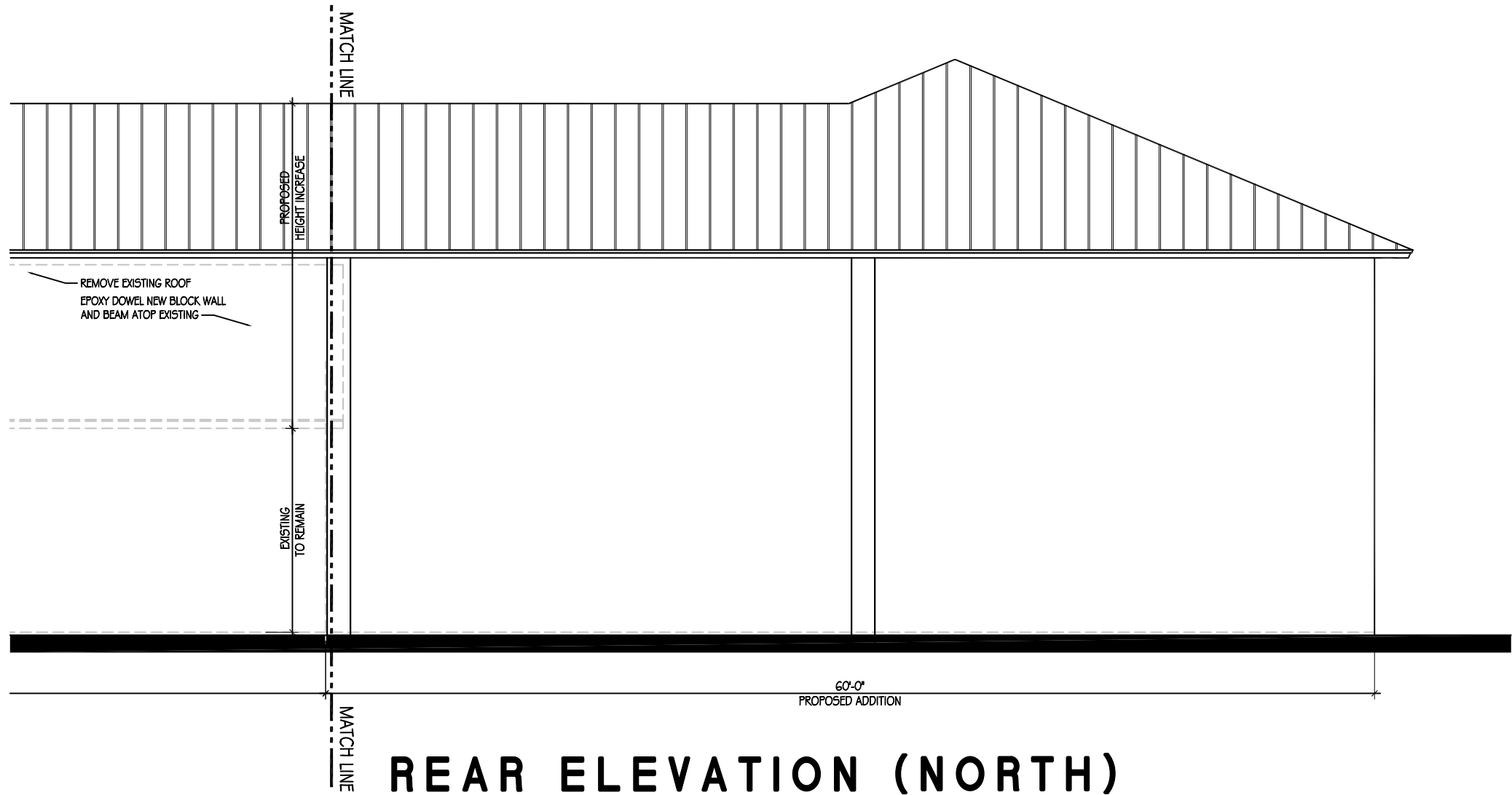
REAR ELEVATION (NORTH)

SCALE : 1/8" = 1'-0"



LEFT ELEVATION (WEST)

SCALE : 1/8" = 1'-0"



REAR ELEVATION (NORTH)

SCALE : 1/8" = 1'-0"

FINISH SCHEDULE & COLOR PALLET

- ROOF- STANDING SEAM METAL ROOF, MILL FINISH. METAL ALLIANCE FL31653-R4
- WINDOWS- WHITE ALUMINUM FRAME, FIXED, TINTED IMPACT GLASS. PGT PW-740, #23-0816.08
- ENTRY DOORS- STORE FRONT WHITE ALUMINUM FRAME, FIXED, TINTED IMPACT GLASS. PGT FD-101, #23-0816.08
- METAL ROLL-UP BAY DOORS- PAINT COLOR SHERWIN WILLIAMS SW6243 "DISTANCE" ROLLING DOOR INDUSTRIES, #24-1211.03
- 2X6 WOOD FASCIA PAINT COLOR, SHERWIN WILLIAMS SW7008 "SNOWBOUND".
- TEXTURED STUCCO- WALL PAINT COLOR SW7632 "MODERN GRAY".
- TEXTURED STUCCO- WALL PAINT COLOR 6246 "NORTH STAR".
- STRUCTURAL COLUMN AND SMOOTH STUCCO BAND- PAINT COLOR "SW7008 SNOW BOUND".

AAC

PZ25-12000014

08/20/2025